

**Unidraf<sup>®</sup>G** SERIES

## **How to Update UnidrafG**

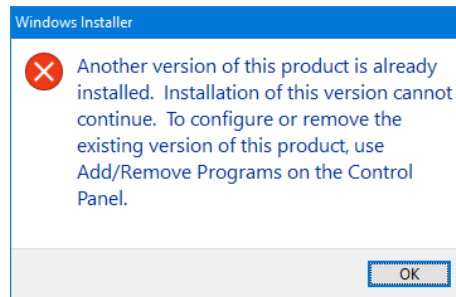
**SINWA ELECTRIC CORPORATION**  
CAD DIVISION E-mail: [unidraf@gmail.com](mailto:unidraf@gmail.com)

This is the procedure to automatically update only the program files in the UnidrafG folder. This method is recommended for normal updates.

**!! Attention !!**

**If this product is installed on a PC, do not run it with the installer.**

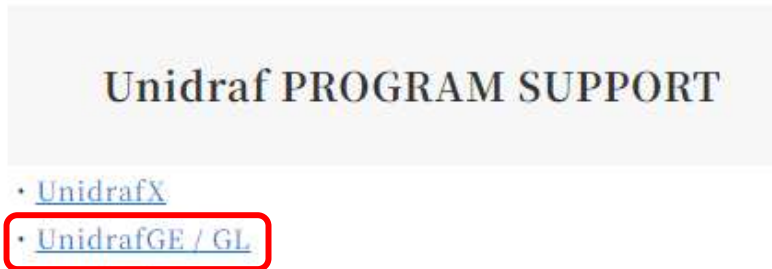
Once you run the installer, you will see the following screen: Following the steps below to uninstall the program will remove all the default data and configuration files already installed.



1. Open the following homepage for Unidraf.

[https://sinwa.co.jp/support\\_en/](https://sinwa.co.jp/support_en/)

2. Click the [UnidrafG] in the [Unidraf PROGRAM SUPPORT]



3. Enter "ID" and the "Password" for support and click the [login] button.

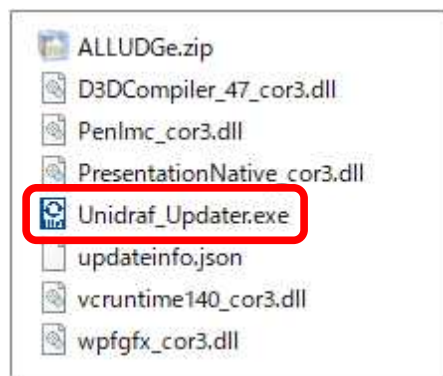
- Click the **[Program Download]** in the **[UnidrafG series Online Support]**.



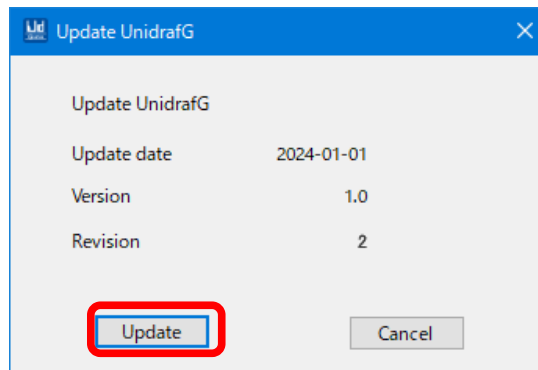
- Click the **[Automatic update program]** in the **[Program List]**.  
\* Please also download other required files. (Help file etc.)

Items /File(Bytes)	Location:Path
<b>• Automatic update program</b> • Update : Jan.01.2024 • Filename : Updater.zip( 66,091KB ) • Version : 1.0 • Revision : 1  *All the EXE files and DLL files are included. *The Help file, the manual, etc. are not included. *If an error occurs and the file does not download, please see <a href="#">here</a> .	YUnidrafGY
<b>• Configuration File for PLC Link</b> • Update : Jan.01.2024 • Filename : PLC.zip( 0KB )	YUnidrafGYPLCY
<b>• Symbol for PLC</b> • Update : Jan.01.2024 • Filename : PLC_UDG.zip( 0KB )	YUnidrafGYsymbolY
<b>• UnidrafGHelp</b> • Update : Jan.01.2024 • Filename : UDGHelp_e.zip( 0KB )	YUnidrafGYHelpY

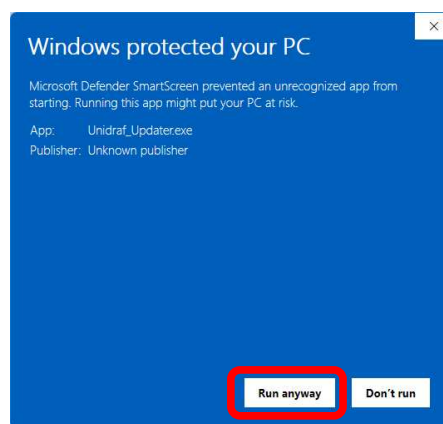
- Extract the downloaded file.
- Double-click "Unidraf\_Updater.exe" in the extracted folder.



8. When the update dialog box appears, click Update.



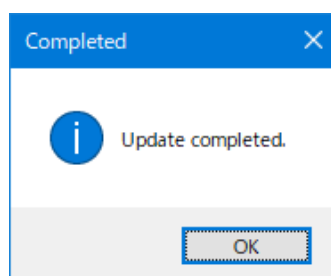
\* If the following screen appears when running "Unidraf\_Updater.exe", click "More info Information" and then click "Run anyway".



\* If the "Select Folder" screen appears after clicking the update button, select the folder where UnidrafG is installed.

Example: **C:¥Sinwa¥UnidrafG¥**

9. When the following message is displayed, press the "OK" button.



10. Start UnidrafG and check the "Version" and "Revision" in the **[Help] - [About Unidraf]**.

