

How to Update Unidraf2010

INDEX

How to Update Only Program Files for Unidraf2010 ... 1

This is a procedure for updating Unidraf2010 by overwriting only program files to Unidraf2010 folder. About usual update, we recommend you this method.

How to Update Using Unidraf2010 Installer 3

This is a procedure for using Unidraf2010 installer. Various sample data and configuration files are included in Unidraf2010 installer. Therefore, if PC with Unidraf2010 is updated by this, the data file and configuration file of the same name may be overwritten.

How to Update Only Program Files for Unidraf2010

This is a procedure for updating Unidraf2010 by overwriting only program files to Unidraf2010 folder. About usual update, we recommend you this method.

1. Open the following homepage for Unidraf.
https://sinwa.co.jp/support_en/
2. Click the [Unidraf2010 Expert / ExpertLT] in the [Unidraf PROGRAM SUPPORT].

Unidraf PROGRAM SUPPORT

- [Unidraf7](#)
- [Unidraf2010 Expert / Expert LT](#)
- [Unidraf5](#)
- [Unidraf Ver. 4.0](#)

3. Enter "ID" and the "Password" for support and click the [login] button.



ID:

Password: Save the password

4. Click the [Program Download] in the [Unidraf2010 Online Support].

Unidraf2010 Online Support

- ▶ [The Supported Newest Functions](#)
- ▶ [The Newest Bug Fix Information](#)
- ▶ [Program Download](#)

5. Click the **[All the Programs]** in the **[Program List]**.

* Please also download other required files. (Help file etc.)

Items /File(Bytes)	Location:Path
<ul style="list-style-type: none"> • All the Programs • Update : Sep.01.2022 • Filename : ALLUD2010e.zip(5,564KB) • Version : 2.0 • Revision : 216 <p>*All the EXE files and DLL files are included. *The Help file, the manual, etc. are not included.</p>	<p>☐角形の領域切り取り</p> <p>¥Unidraf2010¥</p>
<ul style="list-style-type: none"> • Configuration File for PLC Link • Update : Dec.28.2020 • Filename : PLC.zip(24KB) 	¥Unidraf2010¥PLC¥
<ul style="list-style-type: none"> • Symbol for PLC • Update : Sep.04.2020 • Filename : PLC_UD2010.zip(107KB) 	¥Unidraf2010¥symbol¥
<ul style="list-style-type: none"> • Unidraf2010Help • Update : Jul.21.2022 • Filename : UD2010Help_e.zip(13,917KB) 	¥Unidraf2010¥Help¥
<ul style="list-style-type: none"> • Unidraf2010 Manual • Update : Jul.21.2022 • Filename : Ud2010Manual_e.zip(11,001KB) 	¥Unidraf2010¥Document¥

6. Extract the downloaded file.

7. Check that Unidraf2010 has closed, copy all the extracted files, and overwrite the Unidraf2010 folder with **"Unidraf.exe."**

Example: **C:¥Sinwa¥Unidraf2010¥**

8. Start Unidraf2010 and check the "Version" and "Revision" in the **[Help] - [About Unidraf]**.



How to Update Using Unidraf2010 Installer

This is a procedure for using Unidraf2010 installer. Various sample data and configuration files are included in Unidraf2010 installer. Therefore, if PC with Unidraf2010 is updated by this, the data file and configuration file of the same name may be overwritten. For that reason, about usual update, we recommend you [[How to Update Only Program Files for Unidraf2010](#)](P.1).

1. Open the following homepage for Unidraf.
https://sinwa.co.jp/support_en/
2. Click the [**Unidraf2010 Expert / ExpertLT**] in the [**Unidraf PROGRAM SUPPORT**].

Unidraf PROGRAM SUPPORT

- [Unidraf7](#)
- [Unidraf2010 Expert / Expert LT](#)
- [Unidraf5](#)
- [Unidraf Ver. 4.0](#)

3. Enter "**ID**" and the "**Password**" for support and click the [**login**] button.



ID:

Password: Save the password

4. Click the [**Program Download**] in the [**Unidraf2010 Online Support**].

Unidraf2010 Online Support

- ▶ [The Supported Newest Functions](#)
- ▶ [The Newest Bug Fix Information](#)
- ▶ [Program Download](#)

- Click the **[Download]** in the **[Unidraf2010 Installer]**.

Update	Version	Revision
Sep.01.2022	2.0	216

* Keep in mind that the update program with an installer includes various data, various configuration files, etc.

* Extract the downloaded compressed file, double-click the "AutoRun.exe", and start installation.

* In reinstallation, because three choices (Modify / Repair / Remove) are displayed, select the "Repair."

* By upgrade of installer software, even if it selects "Repair", it may be unable to update normally. In that case, please select and try the "Modify."

Download

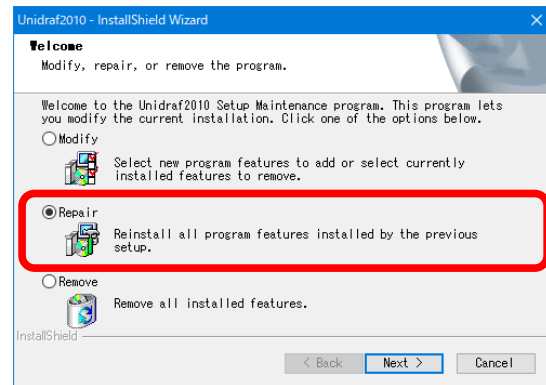
Unidraf2010e.zip (50,069KB)

- Extract the downloaded file.
- Check that Unidraf2010 has closed and double-click the **"AutoRun.exe"** in the "Unidraf2010" folder.
- Click the **[Installation of Unidraf2010]** and install according to the directions in a screen.
Default: C:¥Sinwa¥Unidraf2010¥



Cautions!!

- ✓ **In reinstallation, choose the [Repair] in three choices.**
- ✓ **By having upgraded the "installer software" in August, 2013, although you choose the [Repair] when reinstalling the newest Unidraf, it may not be updated. In such a case, choose the [Modify]. However, once you update by the [Modify], in next reinstallation, the [Modify] will not work any longer. Please keep in mind that the usual [Repair] must be chosen.**



- Start Unidraf2010 and check the "Version" and "Revision" in the **[Help] - [About Unidraf]**.

